

1480 MIDWAY DRIVE

BROOMFIELD RETAIL SPACE FOR LEASE

CONTACT:

[DAN FERRICK](#) OR
[MICHAEL-RYAN MCCARTY](#)
(303) 442-1040
WWW.GIBBONSWHITE.COM

SPACE AVAILABLE:

1,000 - 4,120 SF

LEASE RATE:

\$12.50 NNN (\$4.90)

AVAILABLE:

IMMEDIATELY

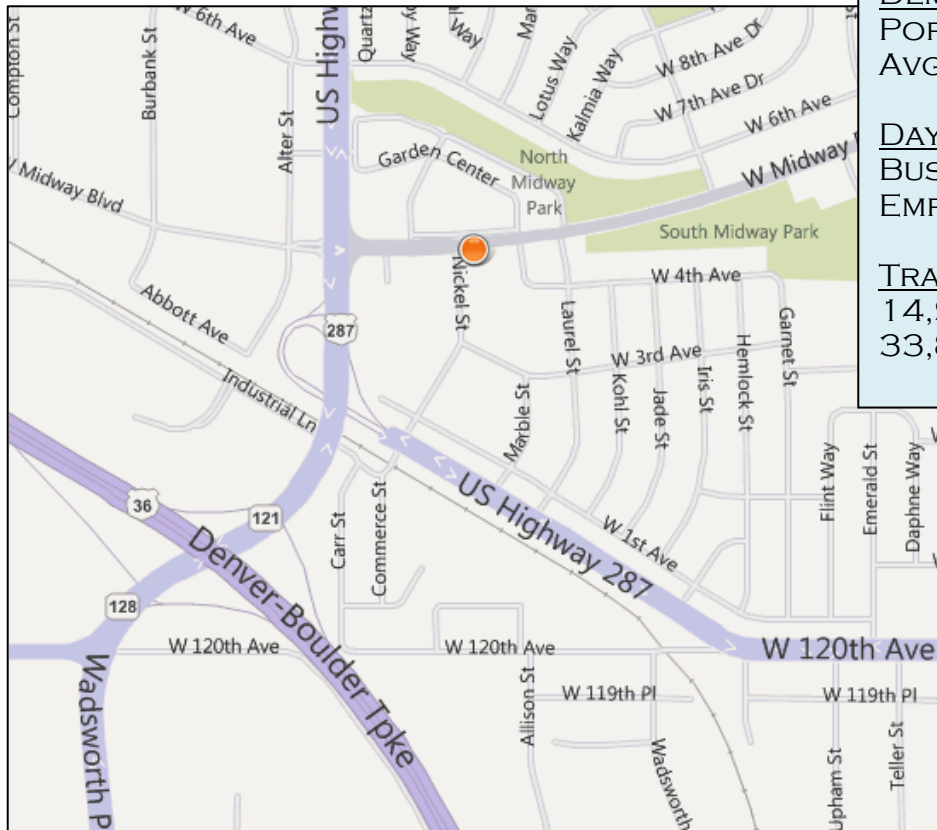
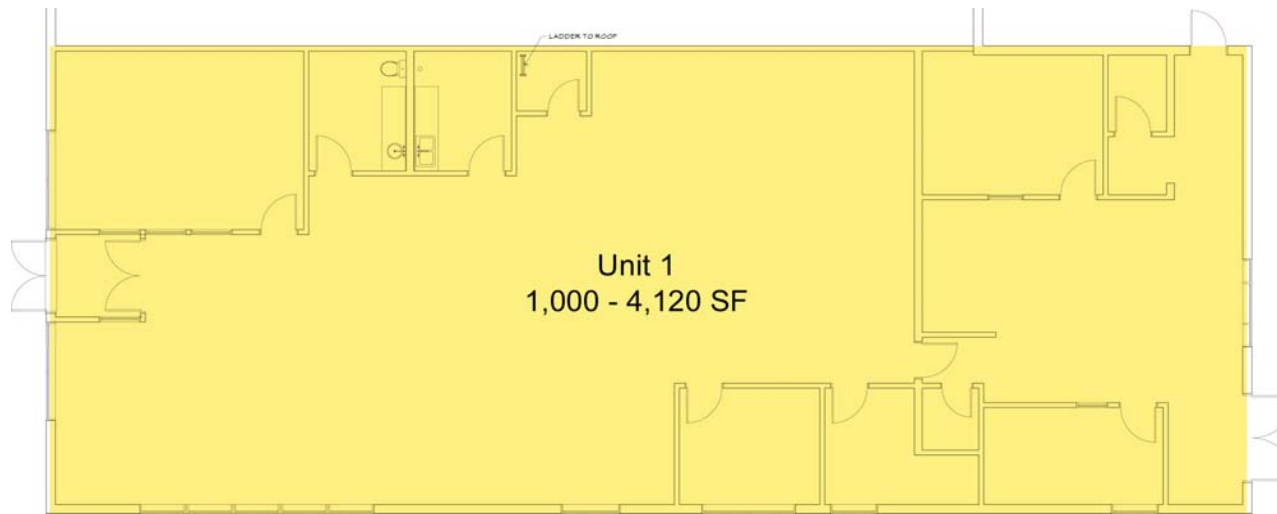


- NICE RETAIL SPACE WITH DRIVE-THRU
- AMPLE POWER - 600 AMPS / 3 PHASE DISTRIBUTED TO THE SPACE
- PLUMBING & DRAINS IN PLACE
- REAR LOADING
- JOIN LAUREL VETERINARY CLINIC AND SUPPER SOLUTIONS
- MONUMENT SIGNAGE AVAILABLE
- DIRECTLY ACROSS FROM THE BROOMFIELD TARGET ESTABLISHED RETAIL CENTER
- LIGHTED INTERSECTION

The information above has been obtained from sources believed reliable. While we do not doubt its accuracy, we have not verified it and make no guarantee, warranty, or representation about it.



2305 CANYON BLVD, SUITE 200
BOULDER, CO 80302



DEMOGRAPHICS	1 MILE	3 MILE	5 MILE
POPULATION (2010 EST.)	9,763	57,125	181,756
AVG. HH INCOME (2010)	\$77,499	\$98,725	\$92,654
DAYTIME POPULATION	1 MILE	5 MILE	10 MILE
BUSINESSES	719	5,930	19,547
EMPLOYEES	9,889	74,679	205,001
TRAFFIC COUNTS:			
14,910 CARS PER DAY AT MIDWAY & NICKEL (2008)			
33,800 CARS PER DAY AT NICKEL & HWY 287 / 120 TH AVE (2008)			



[DAN FERRICK](#) OR [MICHAEL-RYAN MCCARTY](#)

(303) 442-1040

2305 CANYON BLVD, SUITE 200

BOULDER, CO 80302

WWW.GIBBONSWHITE.COM