

1700 S.
1 20TH STREET, LAFAYETTE
LAFAYETTE INDUSTRIAL BUILDING FOR LEASE

CONTACT:

[CHRIS BOSTON, CCIM](#)
OR [JAMES HOWSER](#)
(303) 442-1040
WWW.GIBBONSWHITE.COM

SPACE AVAILABLE: 1,200 – 16,560 SF
LEASE RATE: \$4.95 - \$6.95 NNN (\$2.71)
AVAILABLE: IMMEDIATELY
PARKING: ABUNDANT

- LARGE LOT – APPROXIMATELY 2.47 ACRES WITH LARGE FENCED IN YARD
- PRICED TO LEASE QUICKLY
- BUILDING A HAS DRIVE-IN OVERHEAD DOORS; BUILDING B HAS DRIVE-IN AND DOCK DOORS
- 15' - 18' CEILING HEIGHT
- UNITS CAN BE COMBINED INTO VARIOUS CONFIGURATIONS



BUILDING B ↑

BUILDING A →



The information above has been obtained from sources believed reliable. While we do not doubt its accuracy, we have not verified it and make no guarantee, warranty, or representation about it.



2305 CANYON BLVD, SUITE 200
BOULDER, CO 80302

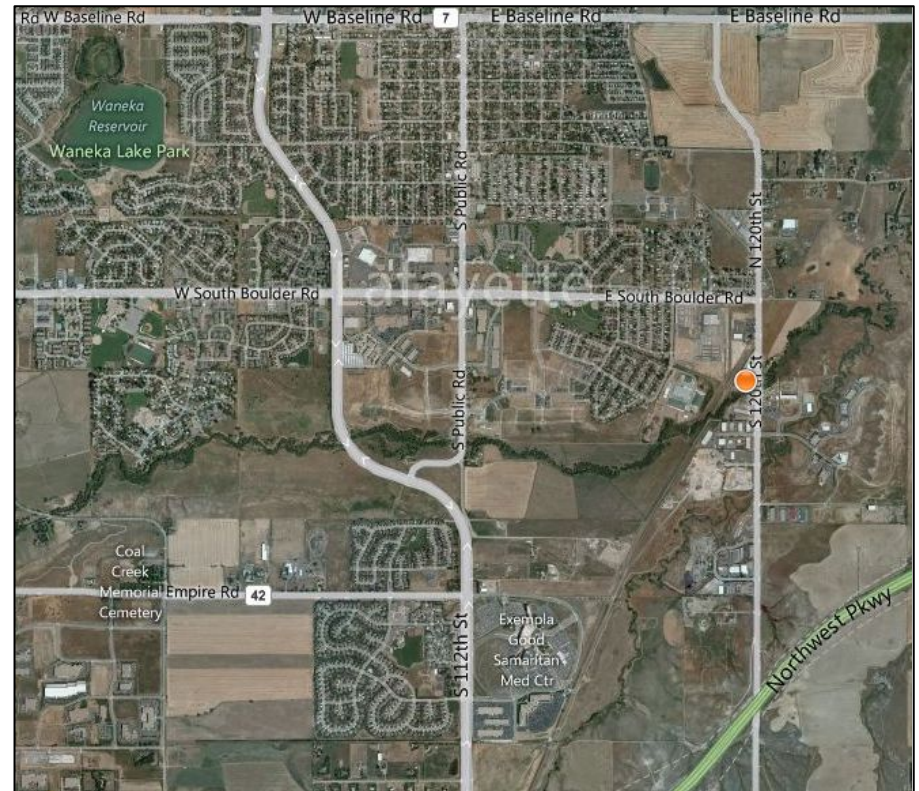
Building A

A7 LEASED	RR	A5 1,680 SF \$5.95 NNN	A4 1,680 SF \$5.95 NNN	A3 LEASED	A2 LEASED	OFFICE A1 1,200 SF \$6.95 NNN
	A6 LEASED					

Building B

B1 4,000 SF \$4.95 NNN	B2 LEASED	B3 2,000 - 4,000 SF \$4.95 NNN	B4 4,000 SF \$4.95 NNN
------------------------------	--------------	--------------------------------------	------------------------------

UNITS CAN BE EASILY COMBINED INTO VARIOUS CONFIGURATIONS.



2305 CANYON BLVD, SUITE 200
BOULDER, CO 80302