

# 3005 CENTER GREEN DR

BEAUTIFULLY FINISHED OFFICE SPACE AVAILABLE

**CONTACT:**

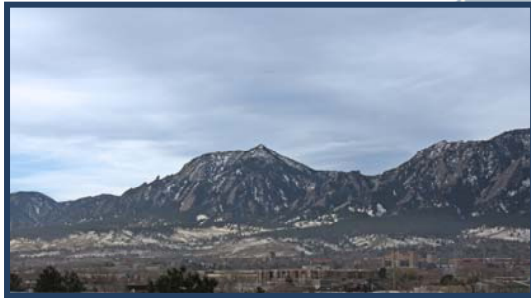
[CHRIS BOSTON, CCIM](#)

OR [LYNDA GIBBONS](#)

(303) 442-1040

[WWW.GIBBONSWHITE.COM](http://WWW.GIBBONSWHITE.COM)

SUITE 115:	1,865 SF
SUITE 205:	7,134 SF
SUITE 230:	1,448 – 1,716 SF
LEASE RATE:	\$12.50 NNN (\$9.60 – FULL SERVICE)



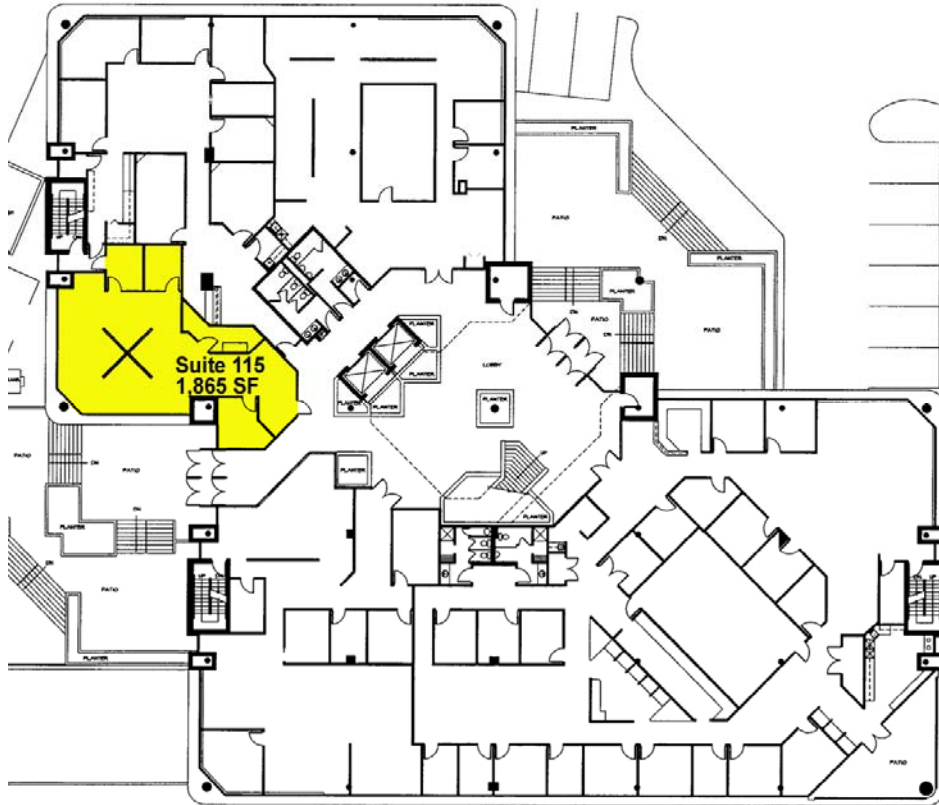
- AMAZING FLATIRON VIEWS!
- ACROSS THE STREET FROM UPCOMING TRANSPORTATION HUB - "BOULDER JUNCTION" & RTD PARK-N-RIDE
- BEAUTIFUL FINISH LEVELS
- VERY NICE LOBBY/ATRIUM WITH MARBLE FLOORS
- GREAT CENTRAL LOCATION - EASY ACCESS FROM FOOTHILLS PARKWAY AND CLOSE TO BIKE PATHS (BIKE STORAGE ON-SITE)
- COVERED & SURFACE PARKING AVAILABLE
- FULLY HANDICAPPED ACCESSIBLE

The information above has been obtained from sources believed reliable. While we do not doubt its accuracy, we have not verified it and make no guarantee, warranty, or representation about it.

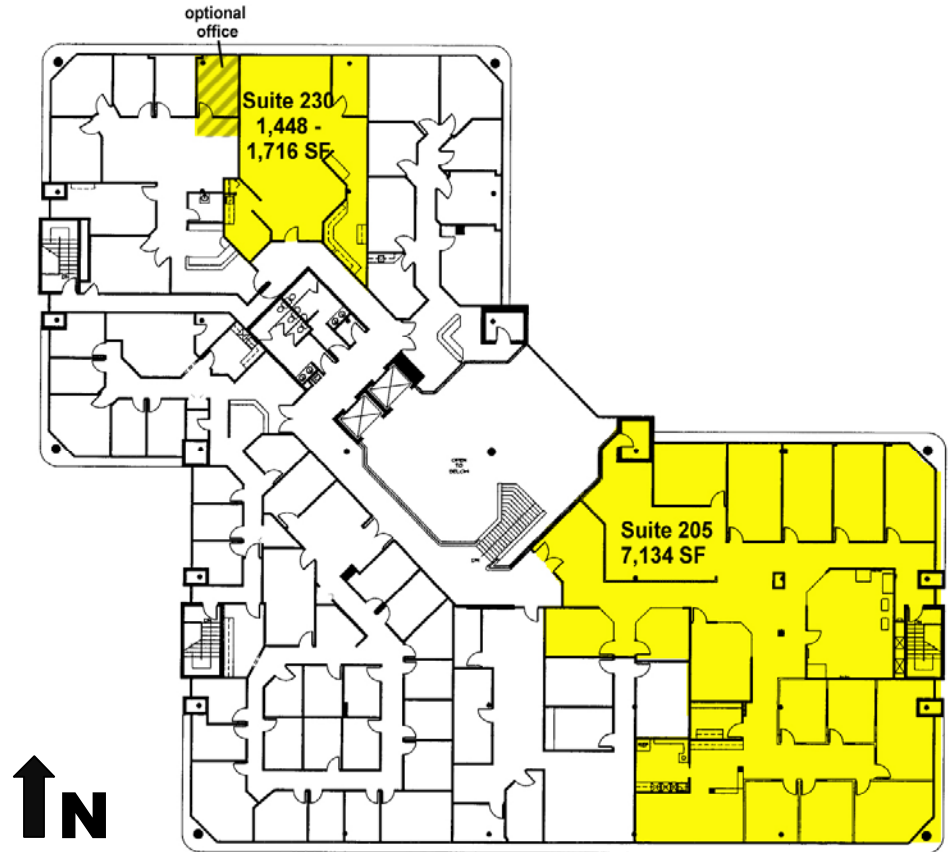


2305 CANYON BLVD, SUITE 200  
BOULDER, CO 80302

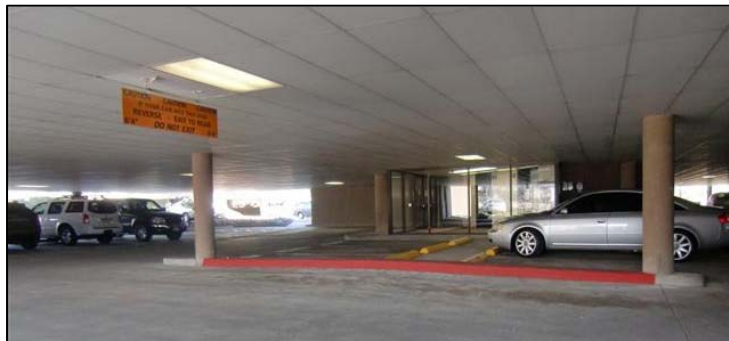
FIRST FLOOR



SECOND FLOOR



ON-SITE  
COVERED  
PARKING!



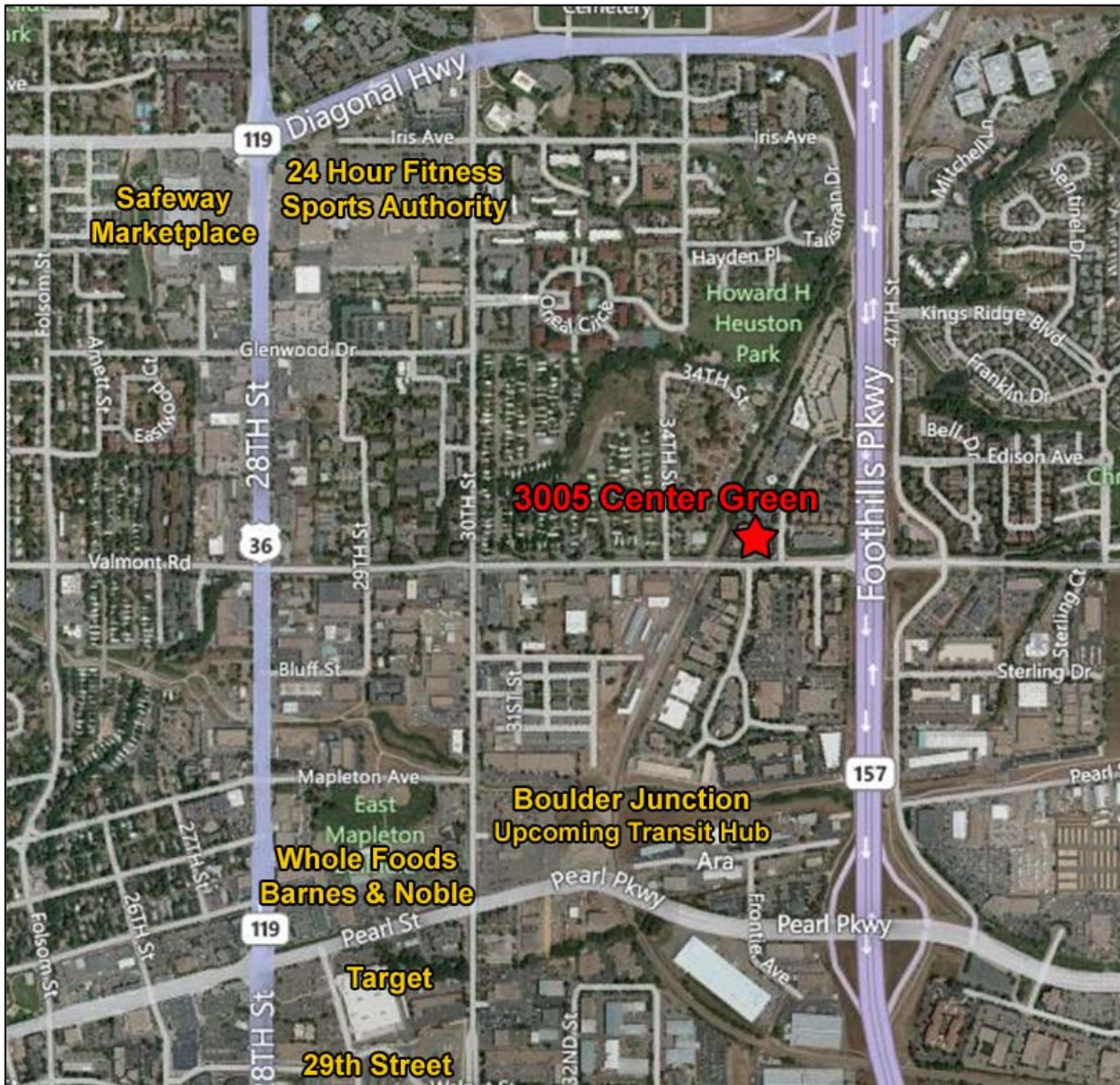
[CHRIS BOSTON, CCIM](#)

OR [LYNDA GIBBONS](#)

(303) 442-1040

2305 CANYON BLVD, SUITE 200,  
BOULDER, CO 80302

[WWW.GIBBONSWHITE.COM](http://WWW.GIBBONSWHITE.COM)



[CHRIS BOSTON, CCIM](#) OR [LYNDA GIBBONS](#)

(303) 442-1040 | 2305 CANYON BLVD, SUITE 200, BOULDER, CO 80302 | [WWW.GIBBONSWHITE.COM](http://WWW.GIBBONSWHITE.COM)