

2560 FORTY-NINTH STREET

AFFORDABLE OFFICE SPACE IN BOULDER

CONTACT:

[CHRIS BOSTON, CCIM](#)

OR [JAMES HOWSER](#)

(303) 442-1040

WWW.GIBBONSWHITE.COM

SPACE AVAILABLE:

1,600 SF

LEASE RATE:

\$13.00 MODIFIED GROSS

AVAILABLE:

IMMEDIATELY

PARKING:

5 DESIGNATED SPACES

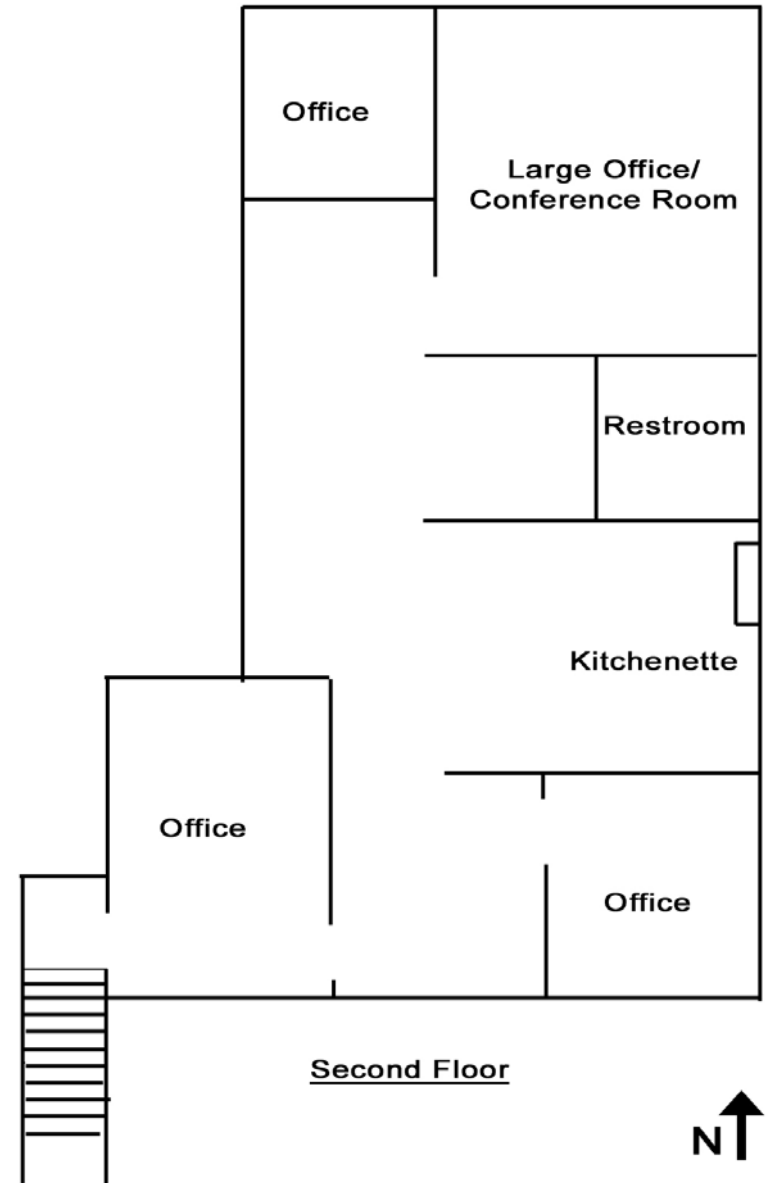


- 2ND FLOOR SPACE WITH LOTS OF WINDOWS
- THREE OFFICES, CONFERENCE ROOM OR OFFICE, TWO OPEN AREAS, PRIVATE KITCHENETTE AND RESTROOM
- VERY ECONOMICAL OFFICE SPACE IN EAST BOULDER
- LOCATED JUST OFF PEARL PARKWAY — GREAT ACCESS TO FOOTHILLS PARKWAY, HWY 119 AND HWY 36

The information above has been obtained from sources believed reliable. While we do not doubt its accuracy, we have not verified it and make no guarantee, warranty, or representation about it.



2305 CANYON BLVD, SUITE 200
BOULDER, CO 80302



[CHRIS BOSTON, CCIM](mailto:Chris.Boston@GibbonsWhite.com) OR [JAMES HOWSER](mailto:James.Howser@GibbonsWhite.com)
 (303) 442-1040
 2305 CANYON BLVD, SUITE 200
 BOULDER, CO 80302
WWW.GIBBONSWHITE.COM