

W⁹⁰⁹ WALNUT STREET

BUILD-TO-SUIT CLASS A RETAIL/OFFICE OPPORTUNITY

CONTACT:

[MICHAEL-RYAN McCARTY](#)

OR [ANGELA TOPEL](#)

(303) 442-1040

WWW.GIBBONSWHITE.COM

SPACE AVAILABLE: 3,000 – 15,500 +/- SF

LEASE RATE: \$26.00 - \$32.00 NNN

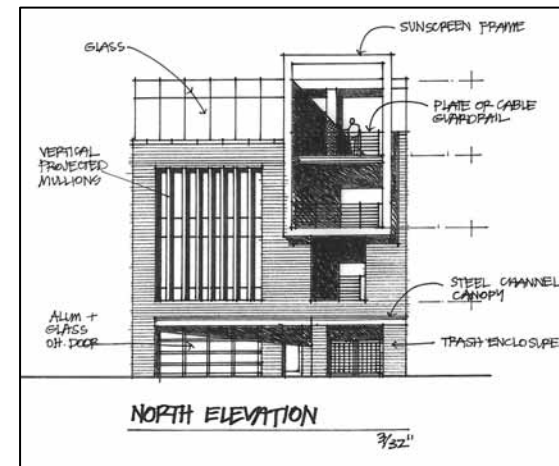


- 3,500+/- SF RESTAURANT OR RETAIL SPACE WITH 400 SF OUTDOOR PATIO DINING AREA
- UP TO 15,500 +/- SF CONTIGUOUS OFFICE SPACE AVAILABLE
- LEED GREEN COMMERCIAL MIXED-USE PROJECT BUILT FROM THE GROUND UP IN BOULDER
- THE HEART OF DOWNTOWN BOULDER ACROSS FROM THE ST. JULIEN HOTEL
- AVAILABLE UPON COMPLETION (APPROXIMATELY 16-20 MONTHS FROM LEASE EXECUTION)



2305 CANYON BLVD, SUITE 200
BOULDER, CO 80302

The information above has been obtained from sources believed reliable. While we do not doubt its accuracy, we have not verified it and make no guarantee, warranty, or representation about it.



[MICHAEL-RYAN McCARTY](#) OR [ANGELA TOPEL](#)

(303) 442-1040 | 2305 CANYON BLVD, SUITE 200, BOULDER, CO 80302 | WWW.GIBBONSWHITE.COM