

1321 & 1323 WEST BASELINE ROAD LAFAYETTE, COLORADO

CONTACT:

[LYNDA GIBBONS](#)

OR [CHRIS BOSTON, CCIM](#)

(303) 442-1040

WWW.GIBBONSWHITE.COM

LOTS FOR SALE – BUILD TO SUIT



1321 WEST BASELINE ROAD – LOT 2

- APPROXIMATELY 34,784 SF
- \$450,000 OR \$12.94/ SF
- APPROVED FOR AN 8,816 SF BUILDING. COULD BE MEDICAL, PROFESSIONAL OR LIGHT INDUSTRIAL.

1323 WEST BASELINE ROAD – LOT 3

- APPROXIMATELY 17,934 SF
- \$350,000 OR \$19.52/ SF
- APPROVED FOR A 6,600 SF BUILDING. COULD BE MEDICAL, OR PROFESSIONAL OFFICE.

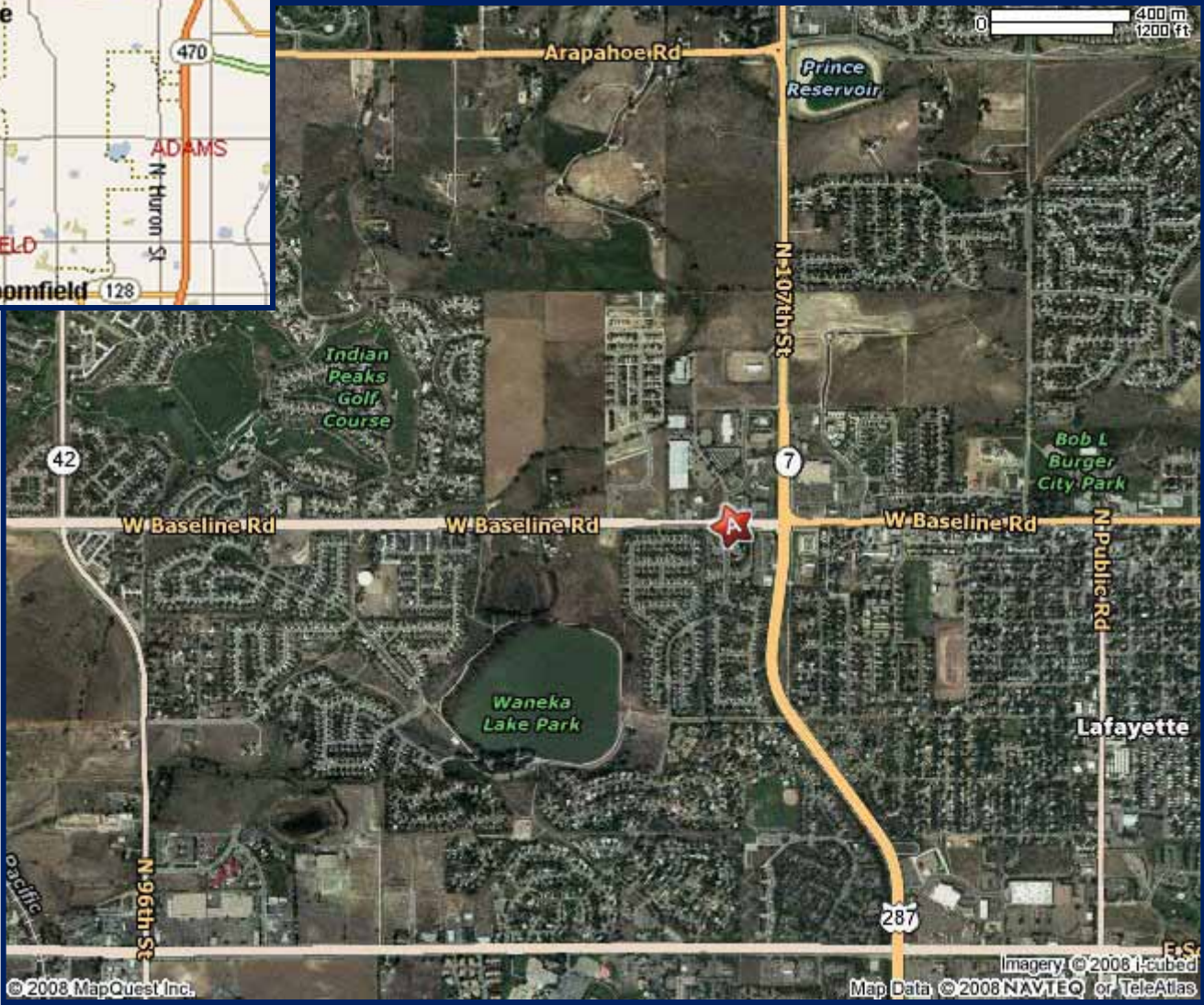
The information above has been obtained from sources believed reliable. While we do not doubt its accuracy, we have not verified it and make no guarantee, warranty, or representation about it.



2305 CANYON BLVD, SUITE 200
BOULDER, CO 80302



**1321 & 1323
WEST BASELINE
AERIAL & MAP**



CONTACT:
[LYNDA GIBBONS](mailto:lynda.gibbons@gibbonswhite.com)
OR [CHRIS BOSTON, CCIM](mailto:chris.boston@gibbonswhite.com)
(303) 442-1040
[WWW.GIBBONSWHITE.COM](http://www.gibbonswhite.com)