

1930 SEVENTEENTH STREET

CLASS A DOWNTOWN OFFICE IN BOULDER

CONTACT:

[ANGELA TOPEL](#) OR
[MICHAEL-RYAN MCCARTY](#)
(303) 442-1040
WWW.GIBBONSWHITE.COM

SUITE 210 AVAILABLE: 2,925 SF
LEASE RATE: \$23.00 NNN (\$9.72 PLUS JANITORIAL)
AVAILABLE: 30 DAYS
PARKING: 5 CITY GARAGE PARKING SPACES
@ \$265/QUARTER

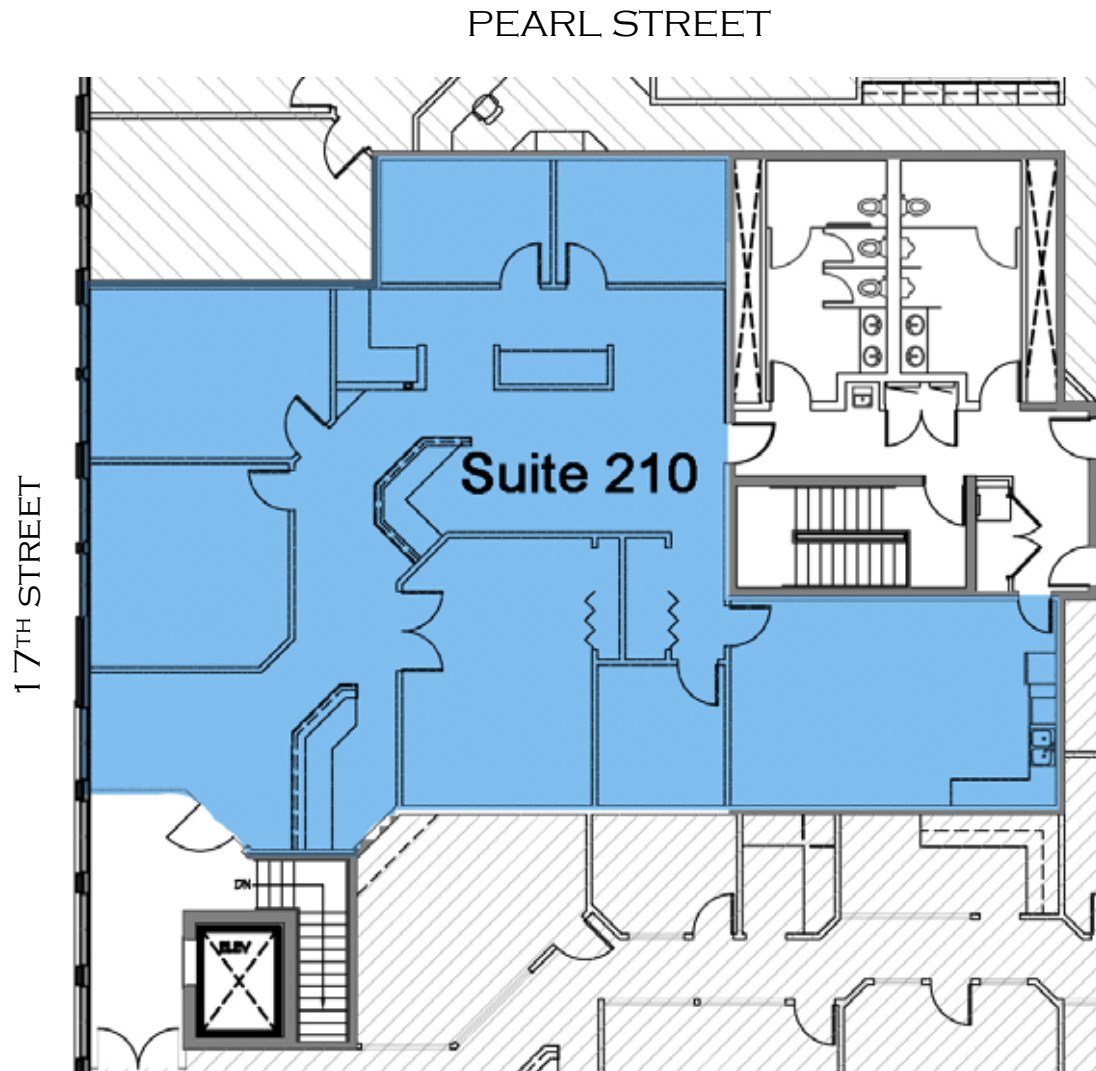


- CLASS A DOWNTOWN OFFICE SPACE
- RECEPTION, 5 OFFICES, OPEN WORK AREA, LARGE CONFERENCE ROOM, LARGE KITCHEN AND BREAK ROOM
- ELEVATOR ACCESS
- EXPENSES INCLUDE ALL UTILITIES EXCEPT JANITORIAL
- VIEWS OF THE FRONT RANGE!



2305 CANYON BLVD, SUITE 200
BOULDER, CO 80302

The information above has been obtained from sources believed reliable. While we do not doubt its accuracy, we have not verified it and make no guarantee, warranty, or representation about it.



2305 CANYON BLVD, SUITE 200
BOULDER, CO 80302