



Manhattan Plaza Offices

75 Manhattan Drive, Boulder, CO

*Manhattan
Plaza Offices*

Michael-Ryan McCarty

mccarty@gibbonswhite.com
(303) 586-5939

Patrick Weeks

patrick@gibbonswhite.com
(303) 586-5935

www.gibbonswhite.com

RentBoulderNow

info@rentboulder.com
(303) 494-6908
www.rentbouldernow.com

 [View Map](#)

Remodeled South Boulder Office For Lease

Suite	Size	Lease Rate	Lease Rate / Month Gross
307	412 sq. ft.	\$17.95 NNN (\$7.95)	\$889* / Month Gross
304	826 sq. ft.	\$17.00 NNN (\$7.95)	\$1,717* / Month Gross

*Including Utilities

- Suite 307 is Recently Updated with New High-End Shared Kitchenette, New Lighting, Carpet and Paint
- Suite 304 has Reception/Waiting Area, 4 Offices and Private Balcony
- Zoned for Medical and Professional Office, Therapy, Tech Companies, & Legal; Tenant Mix Includes Doctors, Therapists, Accountants & Attorneys Among Others
- Easy Access from South Boulder Rd, Table Mesa and US 36 and Close to Table Mesa Park & Ride

The information included has been obtained from sources believed reliable. While we do not doubt its accuracy, we have not verified it and make no guarantee, warranty, or representation about it.



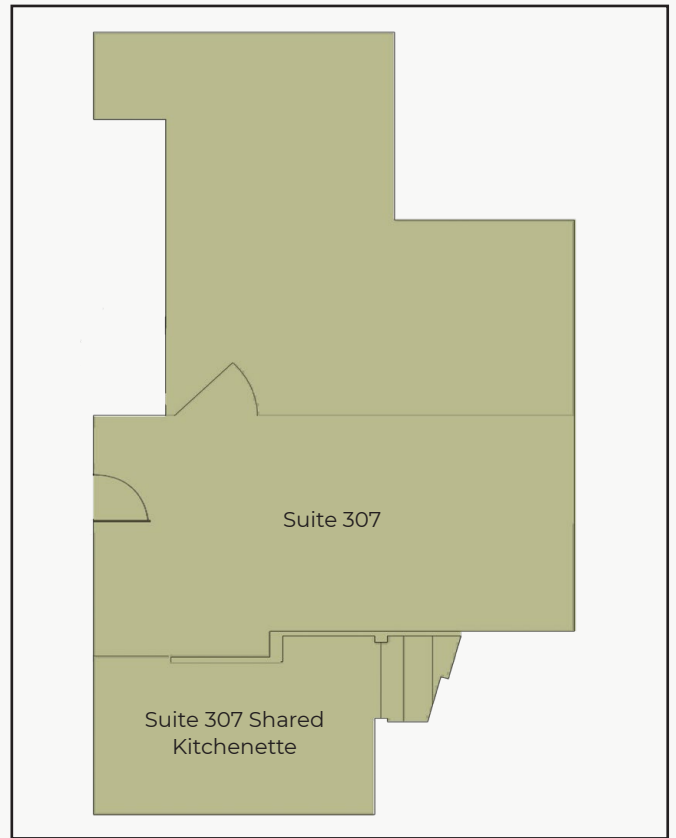
Suite 307 Shared Kitchenette



Suite 307



Suite 304



Suite 307

Suite 307 Shared
Kitchenette

The information included has been obtained from sources believed reliable. While we do not doubt its accuracy, we have not verified it and make no guarantee, warranty, or representation about it.