



The Treehouse

737 29th St, Boulder CO

Michael-Ryan McCarty

mccarty@gibbonswhite.com

(303) 586-5939

www.gibbonswhite.com

RentBoulderNow

info@rentboulder.com

(303) 494-6908

www.rentbouldernow.com



[View Map](#)

Unique Central South Boulder Office

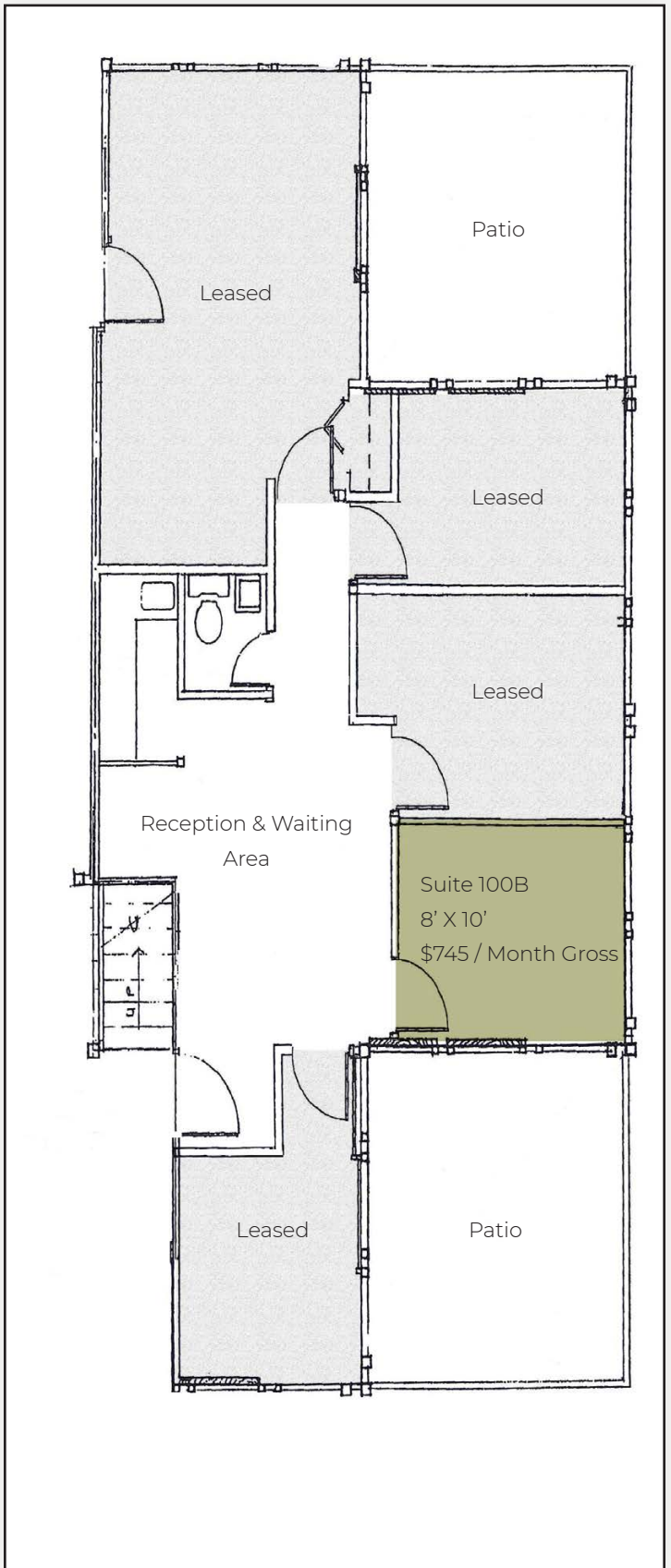
Available Space	150 Rentable sq. ft. (80 Usable sq. ft.)
-----------------	--

Lease Rate / Month Gross	\$745.00*
--------------------------	-----------

*Including Utilities

- Suite 100 B has Full Height Glass Doors, New Paint, High-End Energy Efficient Cellular Shades, Sparkling New Hardwood Floors with Common Area Reception & Waiting Area, Restroom and Kitchenette, Multiple Individual Office Suites with Walls of Windows Overlooking the Pond and Shared Decks
- Architecturally Unique Building Designed by Renowned Architect Hobie Wagner Located in Park-Like Setting Surrounded by Natural Pond & Lush Landscaping
- Floor to Ceiling Windows Throughout and Remodeled Common Areas
- Free On-Site Parking and Immediate Access to Highway 36, Baseline, 28th & 30th Streets

The information included has been obtained from sources believed reliable. While we do not doubt the accuracy of the information, it has not been verified and no guarantee, warranty, or representation is being made.



The information included has been obtained from sources believed reliable. While we do not doubt the accuracy of the information, it has not been verified and no guarantee, warranty, or representation is being made.