



1428 Pearl Street
Boulder, CO

Chris Boston, CCIM, MBA

cboston@gibbonswhite.com

(303) 586-5930

Kegan McNutt

kegan@gibbonswhite.com

(303) 586-5929

www.gibbonswhite.com

 [View Map](#)

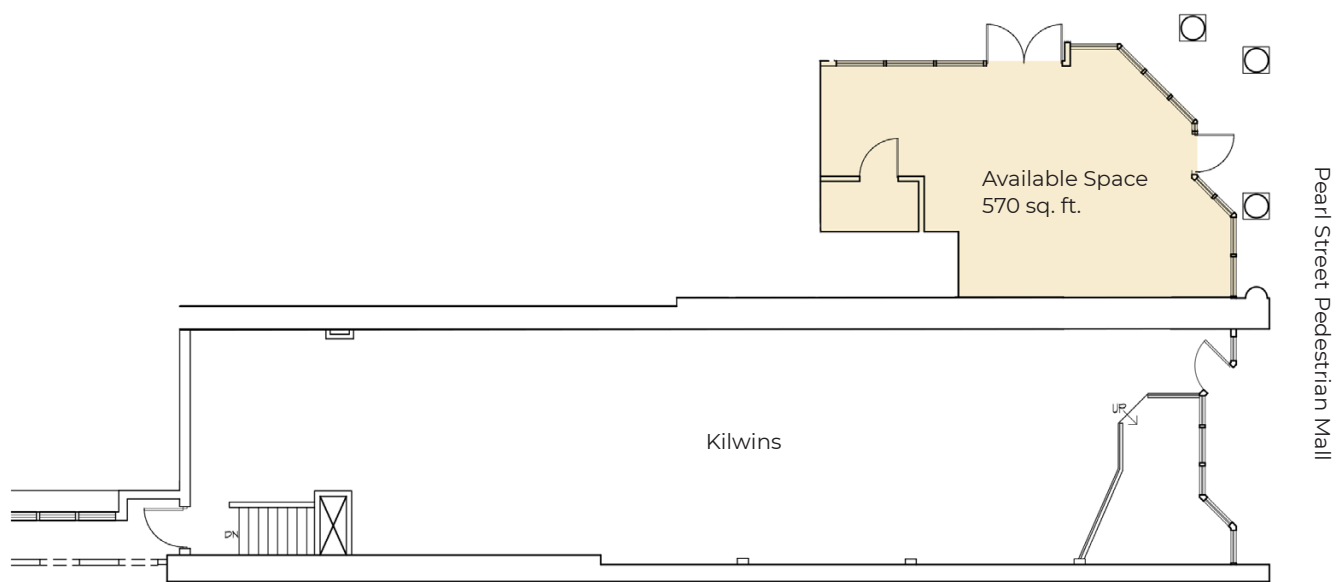
Small Retail Space on Downtown Boulder's Iconic Pearl Street

Available Space	570 sq. ft.
Lease Rate / sq. ft.	\$78.00 NNN
Expenses / sq. ft.	TBD

- Rare Opportunity to Lease a Small Retail Space on the Bricks
- Incredible Storefront Exposure on Pearl Street
- Access to Common Area Restrooms within the Building
- Great Neighboring Tenants Including: Kilwins, Avanti, Starbucks, Whole Sol, Illegal Pete's, Liberty Puzzles & Many More
- Managed Locally by Unico Properties LLC – Known for its Commitment to Delivering Top-Tier Custom Service & Building Quality



The information included has been obtained from sources believed reliable. While we do not doubt the accuracy of the information, it has not been verified and no guarantee, warranty, or representation is being made.



The information included has been obtained from sources believed reliable. While we do not doubt the accuracy of the information, it has not been verified and no guarantee, warranty, or representation is being made.



The information included has been obtained from sources believed reliable. While we do not doubt the accuracy of the information, it has not been verified and no guarantee, warranty, or representation is being made.



The information included has been obtained from sources believed reliable. While we do not doubt the accuracy of the information, it has not been verified and no guarantee, warranty, or representation is being made.