



1727 Pearl Street

Boulder, CO



Angela Topel

angela@gibbonswhite.com
(303) 586-5921

Jaime Pletcher

jaime@gibbonswhite.com
(303) 586-5936

www.gibbonswhite.com

Video Tour

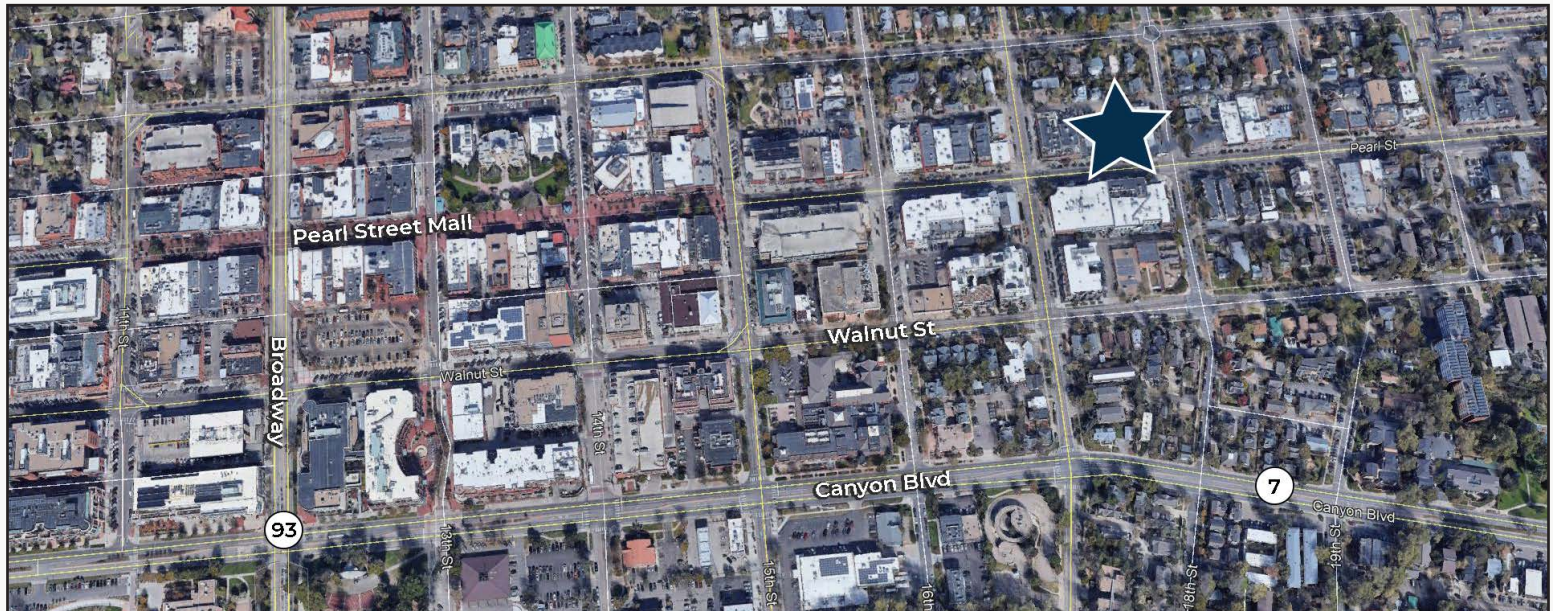
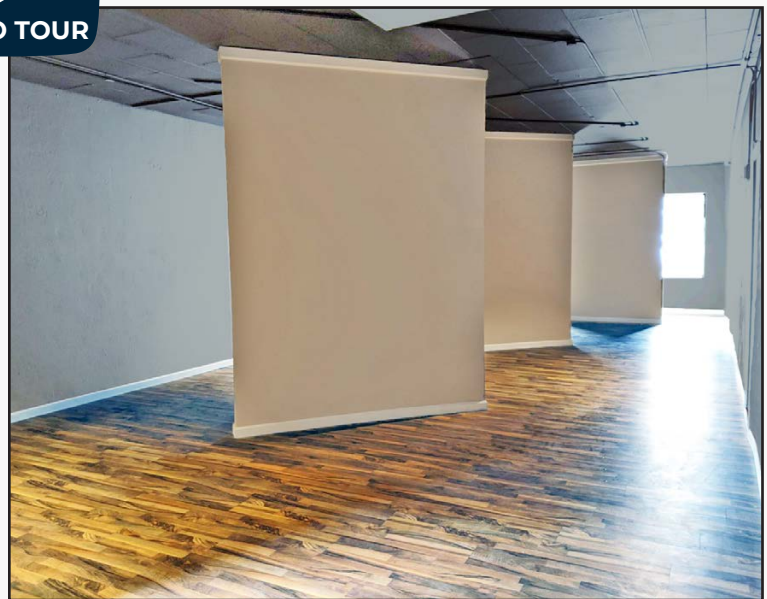
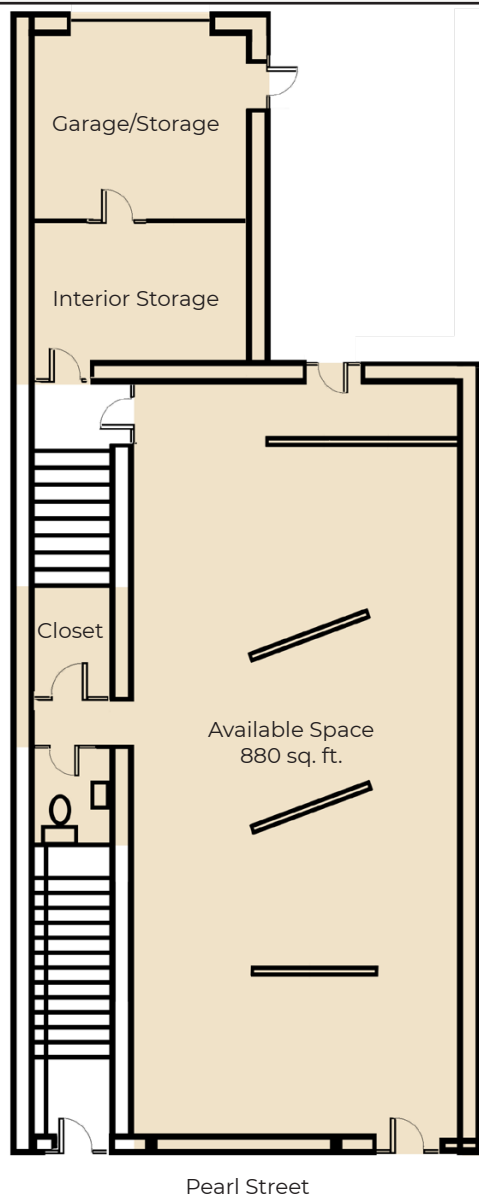
View Map

Downtown Pop-Up Opportunity on Pearl

Available Space	880 sq. ft.
Modified Gross Rent	\$2,200/Month*
*Not Including Utilities	

- Retail / Gallery Space Available Short-Term
- High Exposure on Pearl Street & 17th Street
- Off-Street Parking Access
- Neighboring Pizzeria Locale, Sole Sisters, Frasca, Box Car Coffee, & Cured
- Priced Below Market with Flexible or Month to Month Terms
- Ideal for a Pop-Up or Test Market Location

The information included has been obtained from sources believed reliable. While we do not doubt the accuracy of the information, it has not been verified and no guarantee, warranty, or representation is being made.



The information included has been obtained from sources believed reliable. While we do not doubt the accuracy of the information, it has not been verified and no guarantee, warranty, or representation is being made.