



1044 S. 88th Street

Louisville, CO

Michael-Ryan McCarty

mccarty@gibbonswhite.com
(303) 586-5939

Angela Topel

angela@gibbonswhite.com
(303) 586-5921

www.gibbonswhite.com



Photos & Video Tours



View Map

Louisville Medical Office Space For Lease

Suite	Size	Lease Rate / sq. ft.
101	1,064 sq. ft.	\$16.00 NNN
102	1,451 sq. ft.	\$16.00 NNN
Expenses / sq. ft.		\$15.78*

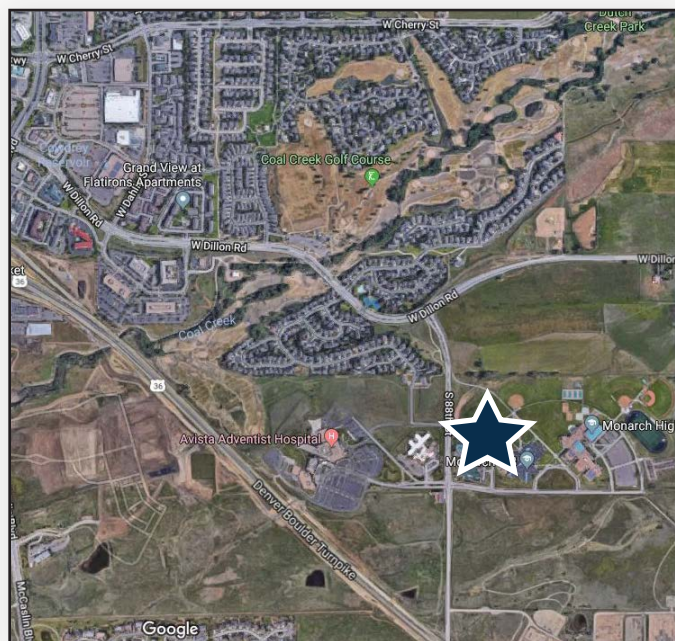
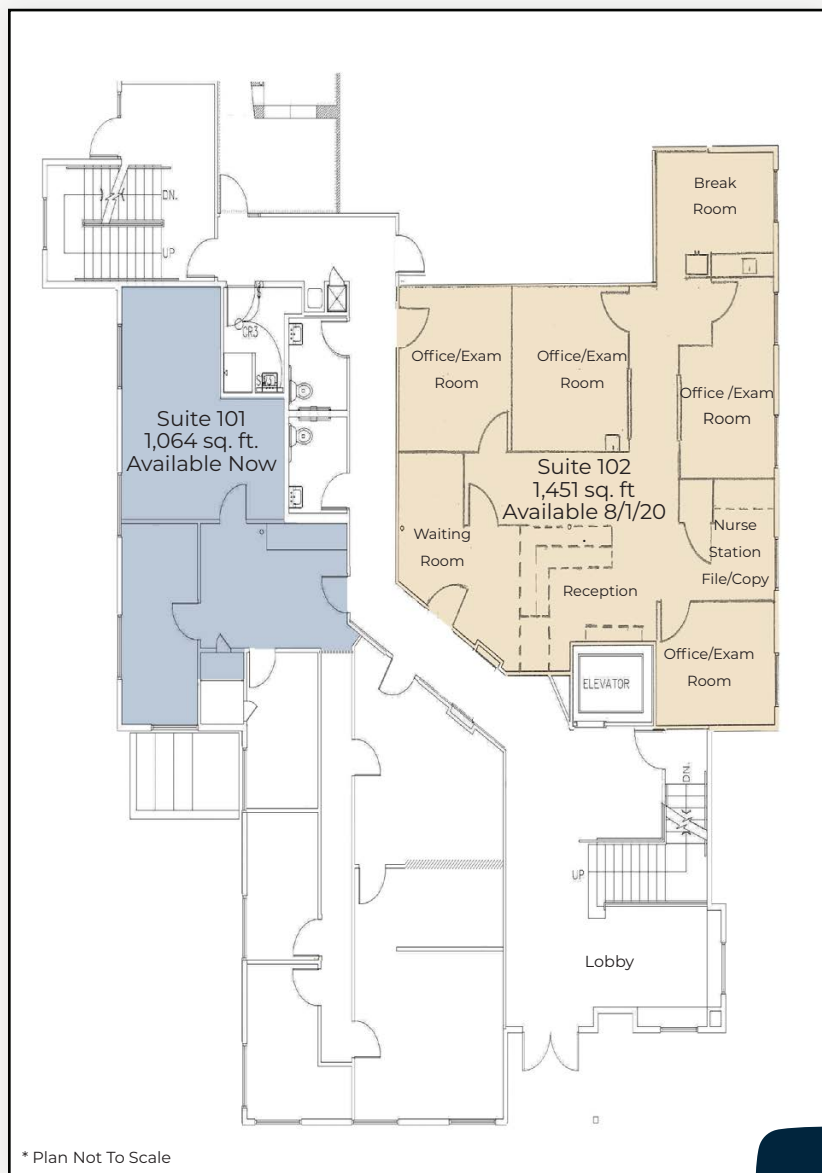
*Including Utilities & Janitorial

- Nicely Finished First Floor Medical Office Space Adjacent the Building Entrance & Main Lobby
- Suite 101 is Available Now & Includes Large Reception, Open Work Space & Private Office
- Suite 102 is Available August 1, 2020 & Includes 4 Office / Exam Rooms, Waiting Room with Built-In Reception, Nurses' Station, Break Room with Dishwasher & Two Entrances
- Located Across the Street from Avista Medical Center & Close to US 36, Whole Foods, Roots Café, Sweet Spot Café, Starbucks, Flatirons Mall, Superior Market Place & Much More
- Ample Surface Parking Available

The information included has been obtained from sources believed reliable. While we do not doubt the accuracy of the information, it has not been verified and no guarantee, warranty, or representation is being made.



2305 Canyon Blvd, Suite 200, Boulder, CO 80302 - (303) 442-1040



The information included has been obtained from sources believed reliable. While we do not doubt the accuracy of the information, it has not been verified and no guarantee, warranty, or representation is being made.