



337 E Simpson Street

Lafayette, CO

Michael-Ryan McCarty

mccarty@gibbonswhite.com
(303) 586-5939

Patrick Weeks

patrick@gibbonswhite.com
(303) 586-5935

www.gibbonswhite.com



Photos & Video Tour



View Map

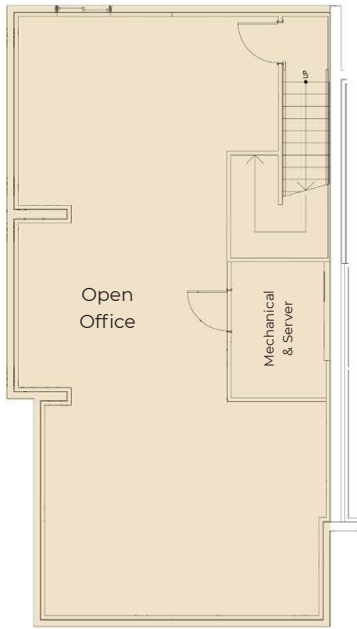
Office / Retail Space in Downtown Lafayette

Available Space	1,160 - 3,548 sq. ft.
Lease Rate / sq. ft.	\$14.00 - \$19.00 NNN
Expenses / sq. ft.	\$10.22*

*Including Utilities

- Charming 2 Story Brick Building in Old Town Lafayette with High Ceilings, Huge Windows on 3 Sides for Abundant Natural Light, Gleaming Wood Floors, Kitchens & In-Suite Restrooms
- 1st Floor May Be Leased Separately – Great Space for Retail or Office with Largely Open Floor Plan, Soaring High Ceilings, Double Glass Entry Doors & Extensive South-Facing Window Line Along East Simpson
- 2nd Floor is Highly Efficient Office Space with 4 Private Offices, Tons of Light, Kitchen Break Area & Small Open Work Area
- Lower Level May Be Leased Separately for Only \$967 / Month Gross – Great for Tech Office & Other Uses
- Close to Local Favorites Such as The Post Brewing, Odd 13 Brewing, Efrain's Mexican Restaurant, Cannon Mine Coffee, Wow! Children's Museum, Art Galleries & Much More

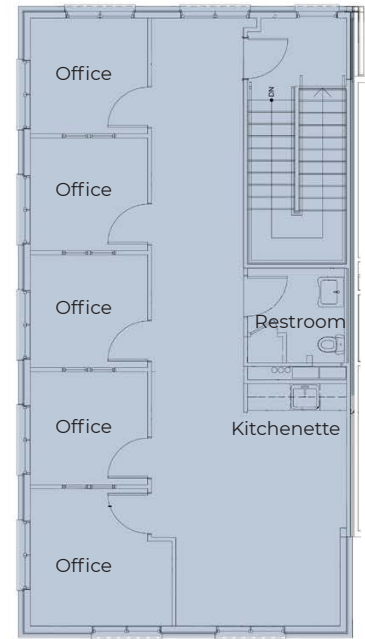
The information included has been obtained from sources believed reliable. While we do not doubt the accuracy of the information, it has not been verified and no guarantee, warranty, or representation is being made.



Lower Level - 1,160 sq. ft.
\$10.00 / sq. ft. Gross



First Floor - 1,194 sq. ft.
\$19.00 / sq. ft. NNN



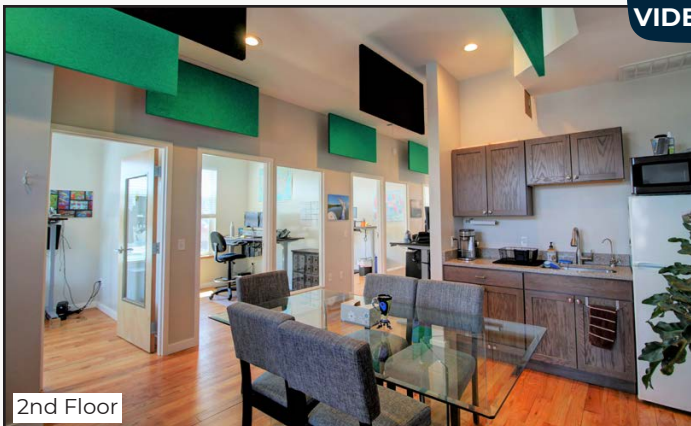
Second Floor - 1,194 sq. ft.
\$19.00 / sq. ft. NNN



1st Floor



Lower Level



2nd Floor



The information included has been obtained from sources believed reliable. While we do not doubt the accuracy of the information, it has not been verified and no guarantee, warranty, or representation is being made.