



# 3825 Iris Avenue

Suite 200, Boulder, CO

## Angela Topel

angela@gibbonswhite.com  
(303) 586-5921

## Michael-Ryan McCarty

mccarty@gibbonswhite.com  
(303) 586-5939

## Patrick Weeks

patrick@gibbonswhite.com  
(303) 586-5935

[www.gibbonswhite.com](http://www.gibbonswhite.com)



**Photos & Video Tour**



**View Map**

## Tranquil Northeast Boulder Office Space

Available Space 1,796 - 4,159 sq. ft.

Lease Rate / sq. ft. \$15.00 NNN

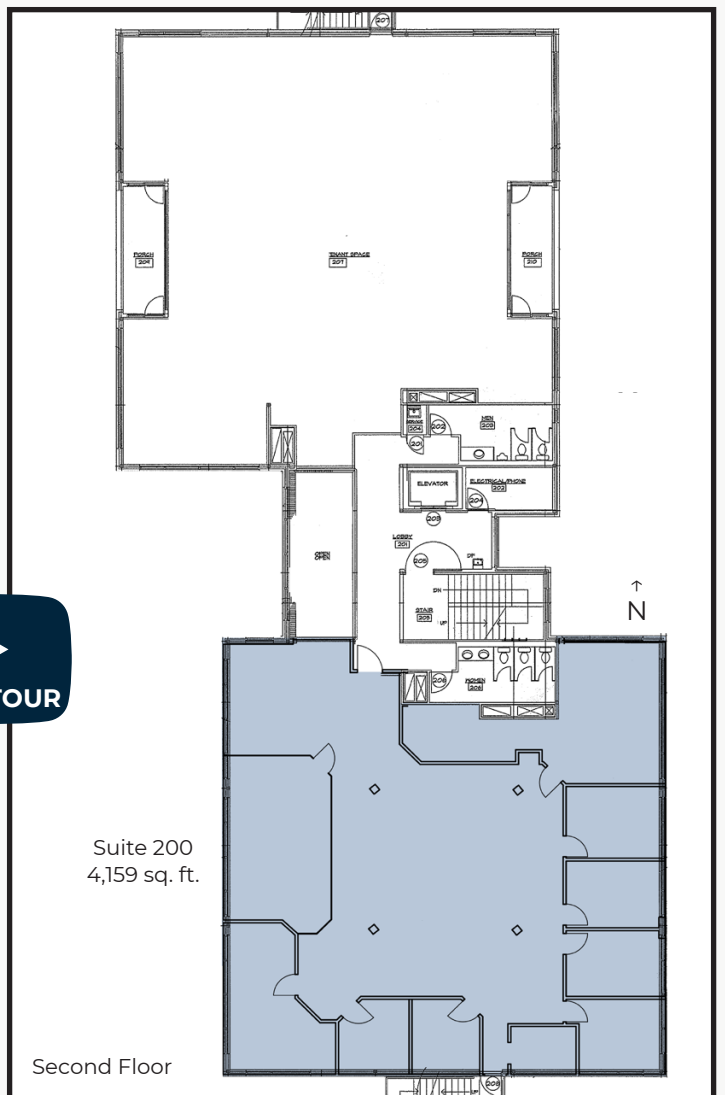
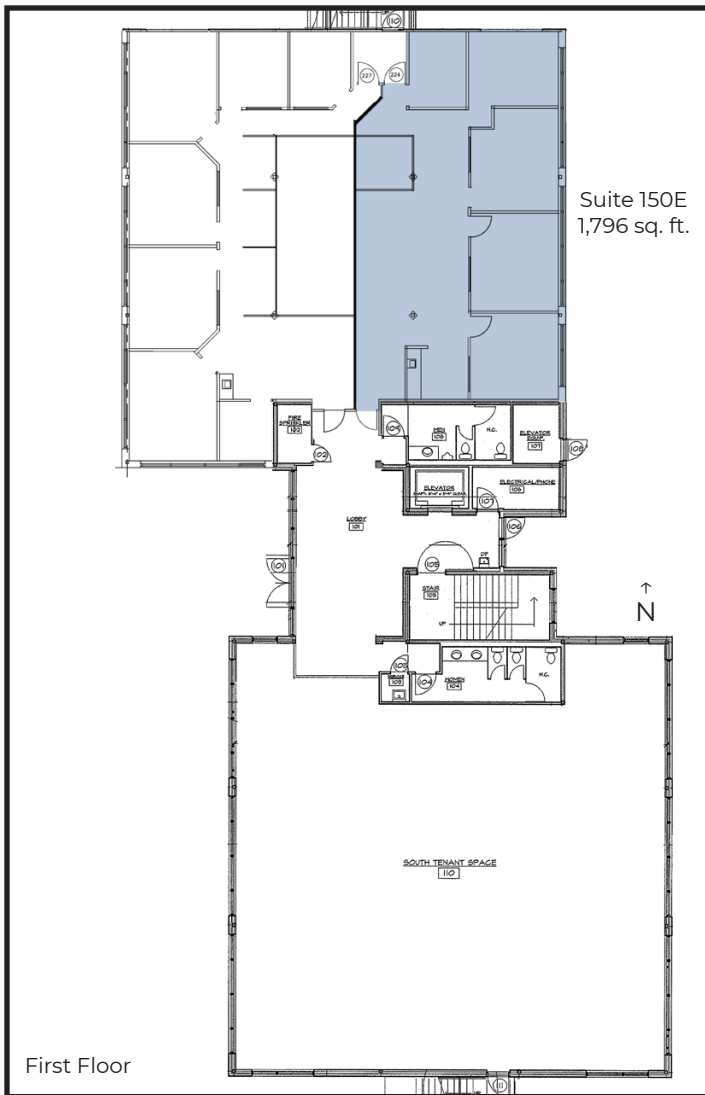
Expenses / sq. ft. \$11.90\*

\*Including Utilities

- Spectacular Setting with Manicured Gardens, Outdoor Break Areas with Gazebo, Patios & Towering Shade Trees
- Suite 200 Features 8 Private Offices with Extensive Window Lines, Glass Walled Conference Room, Coffee Bar with Sink & Break Area, Large Open Work Space & Incredible Views Ready for New Paint & Flooring
- Suite 150E Features 4 Private Offices, Open Work Area, Full-Sized Kitchen / Break Area with Dishwasher & Great Window Lines
- Professional Building with Impressive Lobbies & Elevator
- Potential for Expansion up to 16,000 sq. ft. in the Building
- Abundant Free Covered & Uncovered Parking Available
- Direct Access to Bike Paths & RTD Transit System

The information included has been obtained from sources believed reliable. While we do not doubt the accuracy of the information, it has not been verified and no guarantee, warranty, or representation is being made.





The information included has been obtained from sources believed reliable. While we do not doubt the accuracy of the information, it has not been verified and no guarantee, warranty, or representation is being made.