



2995 Baseline Road

Suite 308, Boulder, CO

Michael-Ryan McCarty

mccarty@gibbonswhite.com
(303) 586-5939

Angela Topel

angela@gibbonswhite.com
(303) 586-5921

Patrick Weeks

patrick@gibbonswhite.com
(303) 586-5935

RentBoulderNow

info@rentbouldernow.com
(303) 464-6908
www.rentbouldernow.com

www.gibbonswhite.com



Photos & Video Tour



View Map

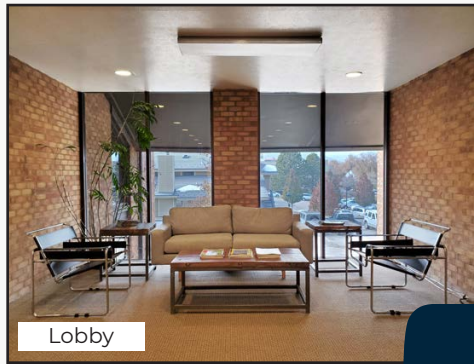
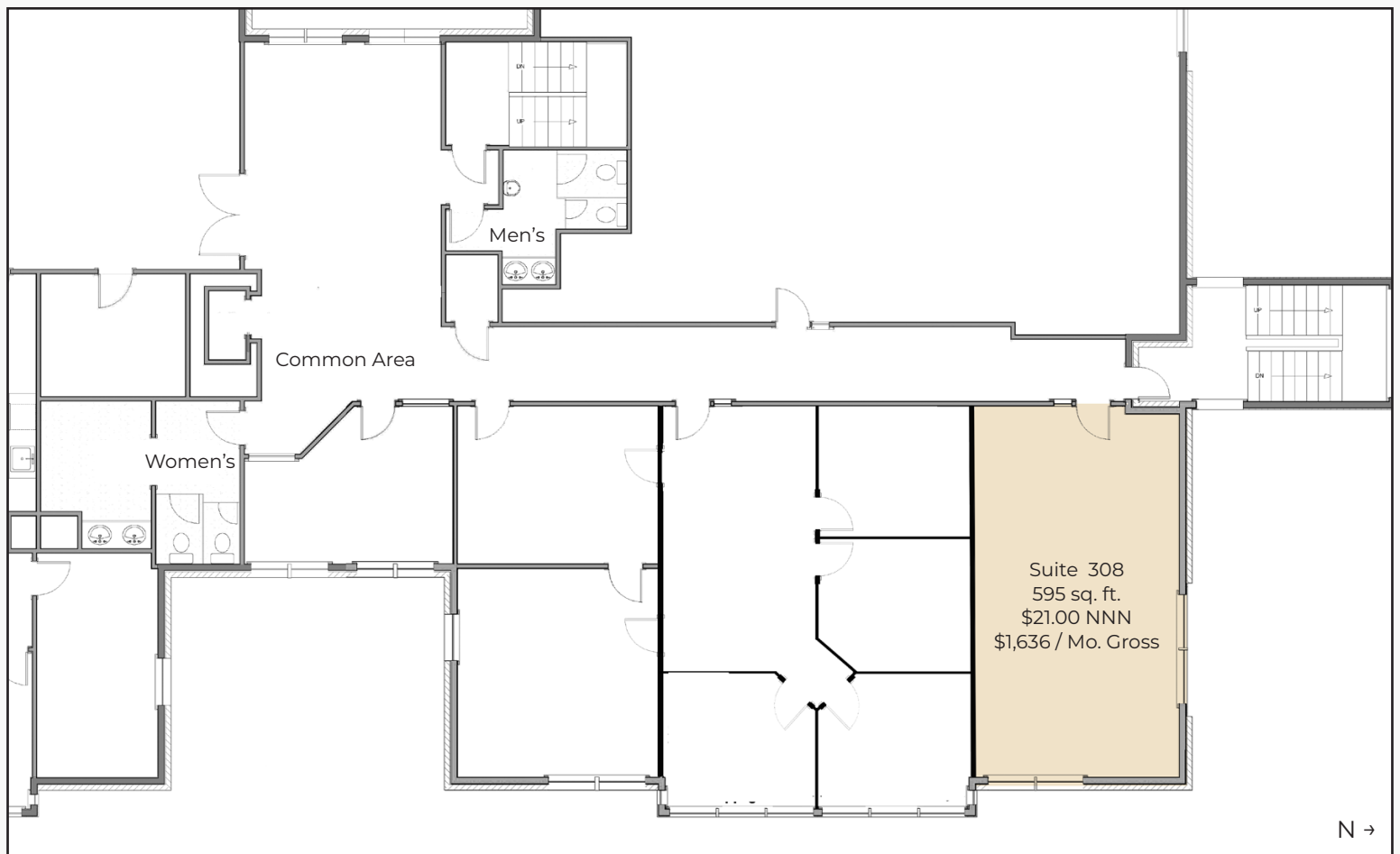
BrickHouse Professional Building

| | |
|--------------------------|-------------|
| Available Space | 595 sq. ft. |
| Lease Rate / sq. ft. | \$21.00 NNN |
| Expenses / sq. ft. | \$12.00* |
| Lease Rate / Month Gross | \$1.636* |

*Including Utilities & Janitorial

- Professional & Medical Office Space with Elevator Access
- Recently Updated Building with Lobby & Shared Waiting Areas
- Suite 308 Has Beautiful East & North-Facing Windows & Open Floor Plan
- Free Onsite Parking & 24/7 Key Card Access with Security Patrol
- At the Corner of Baseline Road & 30th Street with Easy Access to US 36

The information included has been obtained from sources believed reliable. While we do not doubt the accuracy of the information, it has not been verified and no guarantee, warranty, or representation is being made.



The information included has been obtained from sources believed reliable. While we do not doubt the accuracy of the information, it has not been verified and no guarantee, warranty, or representation is being made.