



777 29th Street
Boulder, CO

Lynda Gibbons

lynda@gibbonswhite.com
(303) 586-5920

Angela Topel

angela@gibbonswhite.com
(303) 586-5921

Annie Lund

annie@gibbonswhite.com
(303) 586-5922

www.gibbonswhite.com



Suite 500 Virtual Tour



Video Tours



View Map

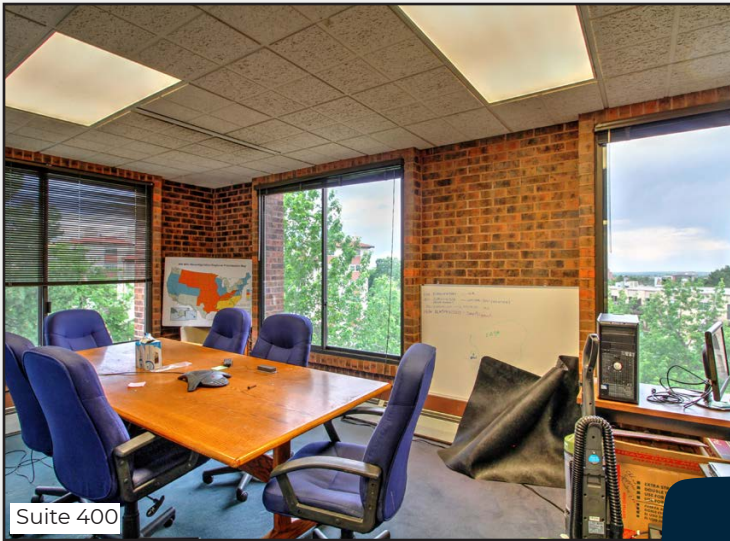
Fantastic Office Space with Amazing Views

Suite	Size	Lease Rate / sq. ft.
Suite 400	1,663 sq. ft.	\$19.50 NNN
Suite 500	3,570 sq. ft.	\$10.75 NNN*
Expenses / sq. ft.		\$13.29**

**Including Utilities

- Professional & Medical Office with High-Quality Modern Updates
- Immediate Access to US 36, Adjacent CU Campus & Minutes to Downtown Boulder & 29th Street Mall
- Close to Many Restaurants, Amante Coffee, Wells Fargo & Sprouts
- Incredible Panoramic Views of the Mountains & Flatirons
- Ample Free On-Site Parking
- *Year 1 Rate for 6+ Year Lease Term; Year 2 Rate \$22.00 NNN

The information included has been obtained from sources believed reliable. While we do not doubt the accuracy of the information, it has not been verified and no guarantee, warranty, or representation is being made.

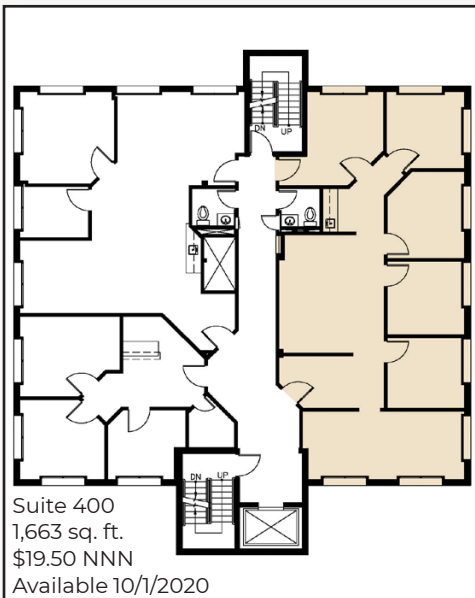


Suite 400



Suite 500

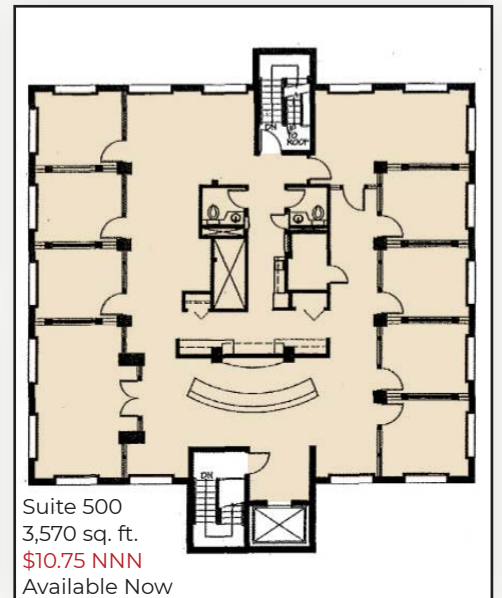
VIDEO TOUR



Suite 400



Suite 500



The information included has been obtained from sources believed reliable. While we do not doubt the accuracy of the information, it has not been verified and no guarantee, warranty, or representation is being made.