



2905 Baseline Road

Boulder, CO

Michael-Ryan McCarty

mccarty@gibbonswhite.com
(303) 586-5939

Angela Topel

angela@gibbonswhite.com
(303) 586-5921

Patrick Weeks

patrick@gibbonswhite.com
(303) 586-5935

www.gibbonswhite.com



Photos & Video Tour



View Map

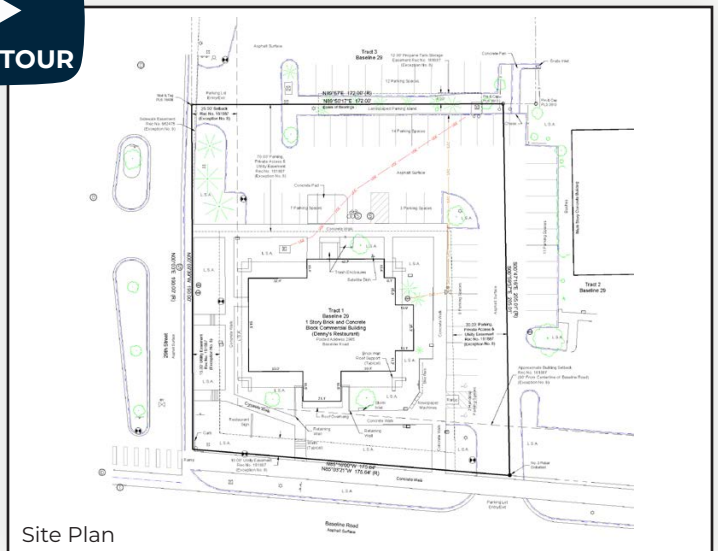
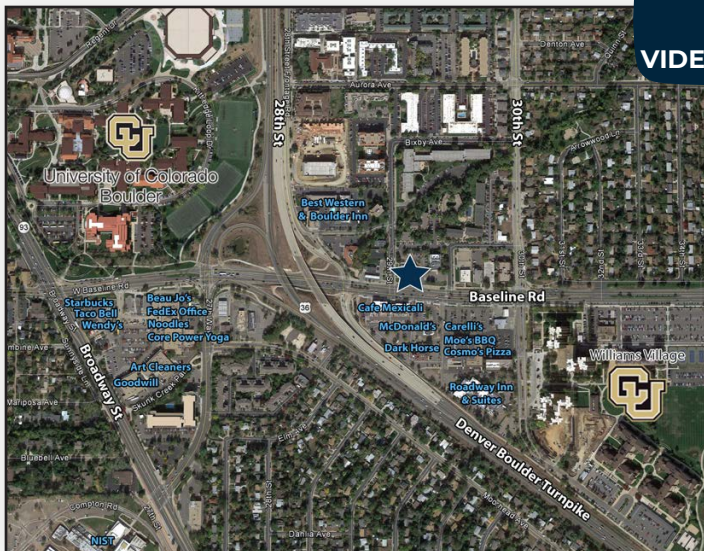
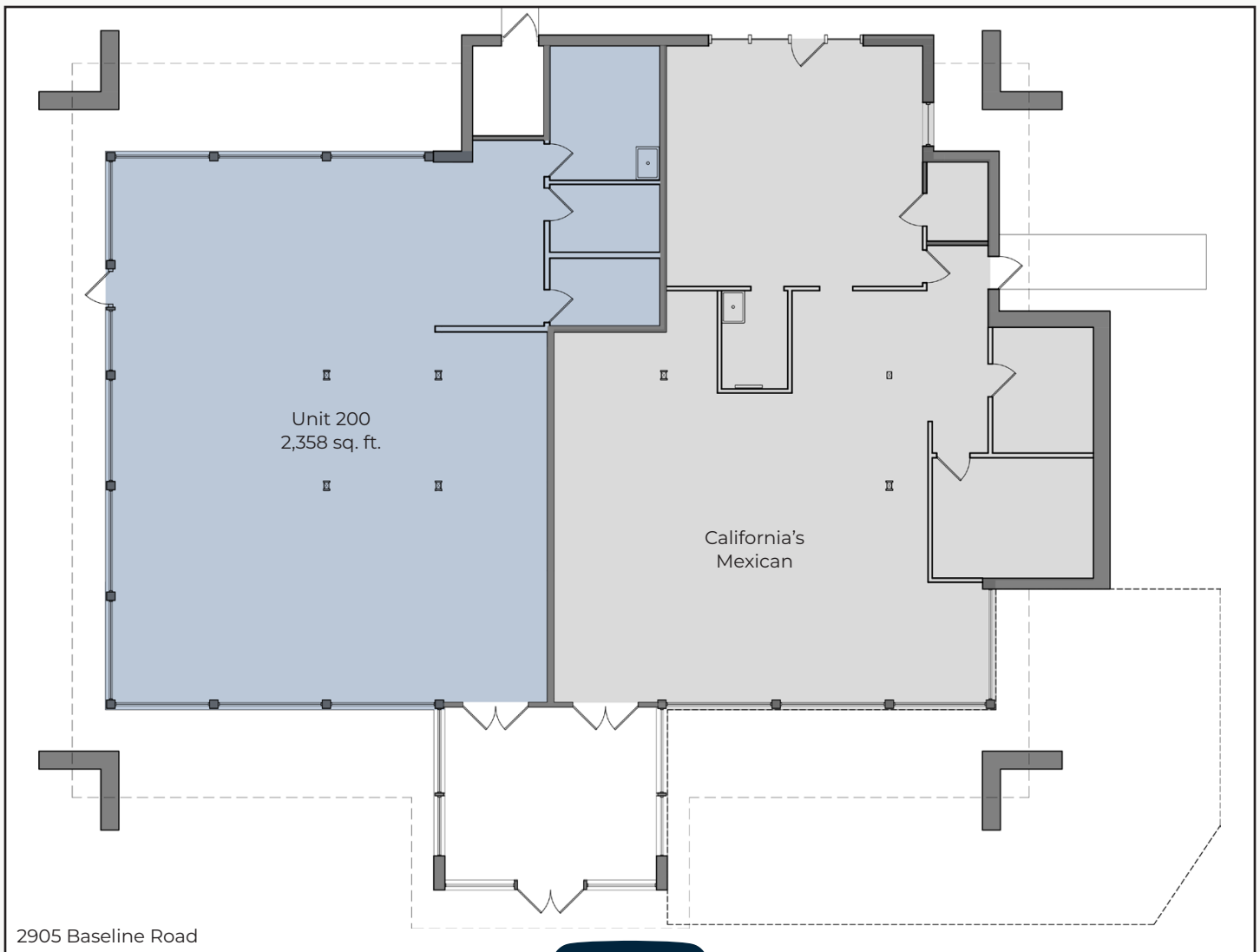
Retail or Office For Lease at US 36 & Baseline

Available Space	2,358 sq. ft.
Lease Rate / sq. ft.	\$19.50 NNN
Expenses / sq. ft.	\$14.00*

*Not Including Utilities

- High Visibility Retail or Office Space Adjacent California's Mexican Restaurant
- Ideal for Medical, Technical or Professional Office, Fitness & Daycare Uses
- Located Near the Intersection of US 36 and Baseline Rd, Adjacent CU Boulder Campus & Williams Village, Sprouts, Amante Coffee, Café Mexicali, Pho Kitchen, Club Pilates & Dark Horse Tavern
- Ample Parking Shared with California's Mexican & Adjacent Properties

The information included has been obtained from sources believed reliable. While we do not doubt the accuracy of the information, it has not been verified and no guarantee, warranty, or representation is being made.



The information included has been obtained from sources believed reliable. While we do not doubt the accuracy of the information, it has not been verified and no guarantee, warranty, or representation is being made.